

# 2021 GVR CAPITAL PROJECT REVIEW (TRIAL)

## Summary by GVR Staff

P&E EVALUATION
CLUB RESPONSIBILITY PER CPM/CLUB AGREEMENT
FUNDED IN ALTERNATE BUDGET
NO ACTION - CRITICAL PATH / FUTURE / COMPLETE

	CLUB	AMOUNT	BRIEF DESCRIPTION	COMMENTS
<b>P&amp;E EVALUATION</b>				
	Social gathering space	\$95,000	Add social gathering space at WC	
	Fitness facility expansion	\$600,000	Repurpose DH Shuffleboard courts as fitness center	
	Dog park	\$270,000	Create a dog park on the DH campus	

## Social Gathering Space

*P&E Evaluation*

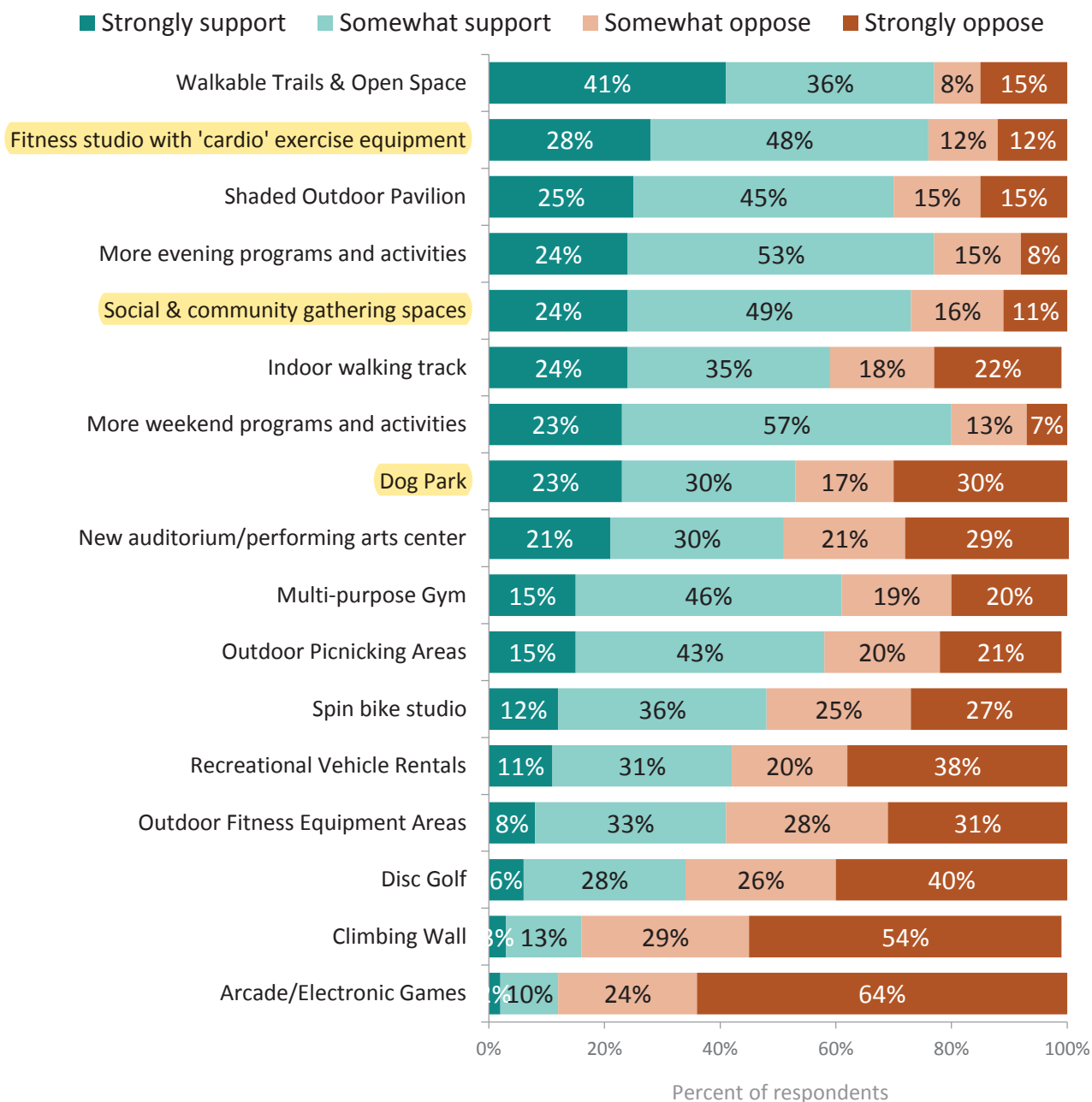
<b>Description</b>	Developing a space or spaces on the West Center campus has been discussed for several years. Both interior and exterior areas to with tables, chairs and amenities that invite members and guests to gather and enjoy refreshments and social interaction have been conceptualized and on various versions of capital plans.
<b>Amount requested</b>	\$95,000
<b>Staff Comments</b>	These spaces would be available to all GVR members, guests and the community to utilize and enjoy. At West Center, concert and movie-goers along with all visitors could enjoy the opportunities spaces such as this will provide.

## Historical Data

<b>2018</b>	2018 Member Feedback Survey	<p>Per the 2018 Member Feedback Survey, social gathering space was highly rated (ranked 3<sup>rd</sup> after Industrial Arts Complex and sustainable design opportunities)</p> <p>Social &amp; community gathering space received 24% strong support, 49% somewhat support, 16% somewhat oppose, and 11% strongly oppose</p>
-------------	-----------------------------	--

**Figure 10: Support for Additional Improvements**

Over the next few years, GVR may make additional improvements to its recreational facilities by adding new programs or deleting existing ones. Potential improvements or new programs may include those listed below. Please indicate the extent to which you would support GVR pursuing each of the items listed below, understanding there will be NO ANNUAL DUES INCREASE to support any of these activities.



This chart displays the proportion of those with an opinion. Between 7% (walkable trails and open space) and 32% (disc golf) of survey participants gave a response of “don’t know” when rating items on this list (see Table 18 in *Appendix A: Complete Responses to Survey Questions*).

## Capital Request Criteria & Impact Assessment

Project: Social Gathering Space

Estimated cost: \$95,000

Estimated installation: 8 months

Preliminary Questions			Details
Are there health & safety impacts tied to this project/request <span style="float: right;">★</span>	Yes <b>No</b>		If Yes, stop scoring and process request through the <b>Request for Health, Safety, or Americans with Disabilities Act (ADA) Services</b> form/process.
What is the estimated cost of the project? <span style="float: right;">★</span>	\$0-25,000 <b>\$25,000+</b>	-> ->	Staff to determine proper funding Complete the Capital Request Assessment

Criteria/Assessment	Rating		Details
Does the request conform to the CPM	Yes No		If No, stop scoring and recategorize request (ex. Club responsibility)
Does this request support GVR's mission and vision and align with the 5 year strategic plan?	No Partially <b>Yes</b>	0 3 <b>6</b>	If No, project will be denied. Requests that do not support GVR's goals will not be approved unless there are extenuating circumstances.
Are there health & safety impact/benefits tied to this project/request	Yes No		If Yes, stop scoring and reallocate request (ex. Operations) <i>Benefit: shade for members, opportunities for social engagement</i>
Does this potentially improve member accessibility?	No Partially Yes <b>N/A</b>	0 3 6	Items to consider: improved walkway/pathway size to accommodate wheelchairs/walkers
What is the estimated cost of the project?	\$0-25,000 <b>\$25,000 +</b>	-> ->	Staff to determine proper funding Complete the Capital Request Assessment
What is the number of GVR members who will have access and potentially benefit	0-100 101-400 401-700 <b>701+</b>	0 1 2 <b>3</b>	
What is the participation trend been over the last 3 years?	Decrease or 0 1-5% increase 5-10% increase 10-15% increase <b>N/A</b>	0 2 4 6	
Estimated additional annual maintenance costs (E.g., Long-term costs? Annual replacements? Additional staff required?)	Decrease or 0 <b>1-5% increase</b> 5-10% increase 10-15% increase	4 <b>3</b> 2 1	<i>Ongoing expectations: replacement and maintenance of seating, landscaping, etc. May need additional staffing for landscaping.</i>

Scoring Range	
Poor	0-6
Fair	7-12
<b>Good</b>	<b>13-20</b>
Excellent	21-31

**Score: 18**

## Capital Request Criteria & Impact Assessment

### Club Specific Criteria

Club Specific Criteria	Rating		Details
Request conforms to CPM/Club Agreement	Yes/No		If No, stop scoring and recategorize request (ex. Club responsibility)
Number of GVR club members who will have access and can benefit	0-50 51-100 101-200 201-500 501+	0 1 2 3 4	
Cost per club member			Calculate cost and divide by club's active membership numbers
Has Club taken steps to maximize utilization?	No Yes	0 3	Items to consider: expand club hours, cap time at each station daily/weekly, reorganized or consolidated, etc.
Would this request have an adverse effect on another group or GVR members? Loss of space?	Yes No	0 2	
Club's history of Capital Funding Requests reviewed and included?	No Score		Review data sheet of previous requests and awards, include in report

Scoring Range	
Poor	
Fair	
Good	
Excellent	

## Fitness Expansion

P&E Evaluation

<b>Request</b>	Repurpose the DH Shuffleboard courts as a new fitness center. This would potentially triple the space for members to enjoy health and fitness opportunities.
<b>Amount requested</b>	\$600,000
<b>Considerations</b>	<ul style="list-style-type: none"> <li>• This project starts a critical path for future amenity improvements for members</li> <li>• Project would add a dedicated studio(s) for fitness classes</li> </ul>
<b>Staff Comments</b>	This space would be available to all GVR members to utilize. This would greatly increase the size and availability of equipment, including equipment that is designed to include motor skills (punching bags, arm bikes, etc.)

## Historical Data

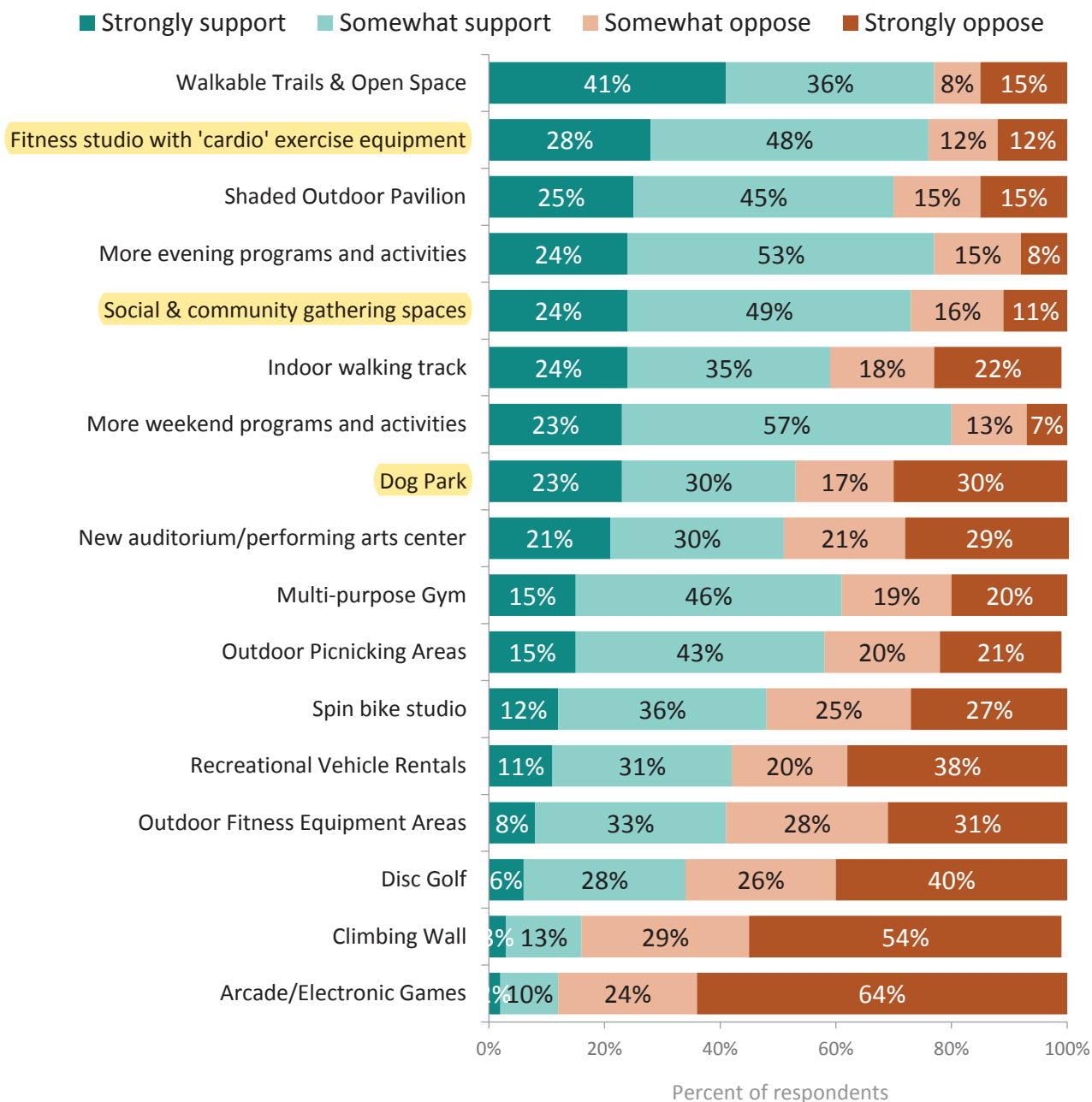
<b>2018</b>	2018 Member Feedback Survey	In the 2018 Member Feedback Survey, fitness studio with cardio equipment was listed: 28% strongly supported, 48% somewhat supported. Only 12% strongly opposed this item.
-------------	-----------------------------	---

<b>2018</b>	Capital Plan	Added to the P&E 3 Year Capital Pan in 2018
-------------	--------------	---

<b>2015-2021</b>	Annual Attendance	<b>2015:</b> 210,505 <b>2016:</b> 211,403 <b>2017:</b> 202,713 <b>2018:</b> 199,722	<b>2019:</b> 207,168 <b>2020:</b> 65,151 <b>2021:</b> 78,586 (as of October)
------------------	-------------------	--	--

**Figure 10: Support for Additional Improvements**

Over the next few years, GVR may make additional improvements to its recreational facilities by adding new programs or deleting existing ones. Potential improvements or new programs may include those listed below. Please indicate the extent to which you would support GVR pursuing each of the items listed below, understanding there will be NO ANNUAL DUES INCREASE to support any of these activities.



This chart displays the proportion of those with an opinion. Between 7% (walkable trails and open space) and 32% (disc golf) of survey participants gave a response of “don’t know” when rating items on this list (see Table 18 in *Appendix A: Complete Responses to Survey Questions*).

## Capital Request Criteria & Impact Assessment

Project:         Fitness Expansion        

Estimated cost:         \$600,000        

Estimated installation:         9 months        

Preliminary Questions			Details
Are there health & safety impacts tied to this project/request <span style="float: right;">★</span>	Yes <b>No</b>		If Yes, stop scoring and process request through the <b>Request for Health, Safety, or Americans with Disabilities Act (ADA) Services</b> form/process.
What is the estimated cost of the project? <span style="float: right;">★</span>	\$0-25,000 <b>\$25,000+</b>	-> ->	Staff to determine proper funding Complete the Capital Request Assessment

Criteria/Assessment	Rating		Details
Does the request conform to the CPM	Yes No		If No, stop scoring and recategorize request (ex. Club responsibility)
Does this request support GVR's mission and vision and align with the 5 year strategic plan?	No Partially <b>Yes</b>	0 3 <b>6</b>	If No, project will be denied. Requests that do not support GVR's goals will not be approved unless there are extenuating circumstances.
Are there health benefits associated with this project? <span style="float: right;">★</span>	No Partially <b>Yes</b>	0 3 <b>6</b>	<i>Potential exercise and activity, positive mental health associated with playing with animals, potential reduction in stress, depression, and grief.</i>
Does this potentially improve member accessibility?	No Partially <b>Yes</b> N/A	0 3 <b>6</b>	Items to consider: improved walkway/pathway size to accommodate wheelchairs/walkers
What is the estimated cost of the project?	\$0-25,000 <b>\$600,000+</b>	-> ->	Staff to determine proper funding Complete the Capital Request Assessment
What is the number of GVR members who will have access and potentially benefit	0-100 101-400 401-700 <b>701+</b>	0 1 2 <b>3</b>	
What is the participation trend been over the last 3 years?	Decrease or 0 <b>1-5% increase</b> 5-10% increase 10-15% increase N/A	0 <b>2</b> 4 6	<i>2018 – 199,712 2019 – 207,168 2020 – 65,151 2021 (to date) – 78, 586</i>
Estimated additional annual maintenance costs (E.g., Long-term costs? Annual replacements? Additional staff required?)	Decrease or 0 <b>1-5% increase</b> 5-10% increase 10-15% increase	4 <b>3</b> 2 1	<i>Preventative maintenance contract, equipment repairs and replacements, no staff increase identified at this time. Increase in utilities.</i>

Scoring Range	
Poor	0-6
Fair	7-12
Good	13-20
<b>Excellent</b>	<b>21-31</b>

**Score: 26**



## Capital Request Criteria & Impact Assessment

### Club Specific Criteria

Club Specific Criteria	Rating		Details
Request conforms to CPM/Club Agreement	Yes/No		If No, stop scoring and recategorize request (ex. Club responsibility)
Number of GVR club members who will have access and can benefit	0-50 51-100 101-200 201-500 501+	0 1 2 3 4	
Cost per club member			Calculate cost and divide by club's active membership numbers
Has Club taken steps to maximize utilization?	No Yes	0 3	Items to consider: expand club hours, cap time at each station daily/weekly, reorganized or consolidated, etc.
Would this request have an adverse effect on another group or GVR members? Loss of space?	Yes No	0 2	
Club's history of Capital Funding Requests reviewed and included?	No Score		Review data sheet of previous requests and awards, include in report

Scoring Range	
Poor	
Fair	
Good	
Excellent	

## Dog Park

*P&E Evaluation*

<b>Description</b>	Add a dog park for use by members and their pets.
<b>Estimated Cost</b>	\$270,000
<b>Staff Comments</b>	There are three dog parks in the Green Valley area: Quail Creek, Anamax, and Desert Meadows Park. Per the CPM, animals are not permitted on GVR property. Will this be designed for GVR members only or the surrounding community? Additional costs may be necessary if this will be accessible via member card only.

### Historical Data

<b>2016</b>	Master Plan	Dog park was identified at Desert Hills in the WSM Master Plan.
<b>2018</b>	2018 Member Feedback Survey	In the 2018 Member Feedback Survey, a dog park received: 23% strongly supported, 30% somewhat supported, 17% somewhat opposed, and 30% strongly opposed this item.

## Capital Request Criteria & Impact Assessment

Project:           Dog Park            
 Estimated cost:           \$270,000           Estimated installation:           7 months          

Preliminary Questions			Details
Are there health & safety impacts tied to this project/request <span style="float: right;">★</span>	Yes No		If Yes, stop scoring and process request through the <b>Request for Health, Safety, or Americans with Disabilities Act (ADA) Services</b> form/process. <i>Safety concern with dog bites</i>
What is the estimated cost of the project? <span style="float: right;">★</span>	\$0-25,000 <b>\$25,000+</b>	-> ->	Staff to determine proper funding Complete the Capital Request Assessment


Criteria/Assessment	Rating		Details
Does the request conform to the CPM	Yes <b>No</b>	3 <b>0</b>	CPM Section IV, Subsection I, letter S states: Animals are not permitted in or on GVR property, with the exception of Service animals, unless otherwise authorized by the GVR Chief Executive officer (CEO) to accommodate community events or other special circumstances.
Does this request support GVR's mission and vision and align with the 5-year strategic plan?	No Partially <b>Yes</b>	0 3 <b>6</b>	If No, project will be denied. Requests that do not support GVR's goals will not be approved unless there are extenuating circumstances.
Are there health benefits associated with this project? <span style="float: right;">★</span>	No Partially <b>Yes</b>	0 3 <b>6</b>	<i>Potential exercise and activity, positive mental health associated with playing with animals, potential reduction in stress, depression, and grief.</i>
Does this potentially improve member accessibility?	<b>No</b> Partially Yes N/A	<b>0</b> 3 6	Items to consider: improved walkway/pathway size to accommodate wheelchairs/walkers.
What is the number of GVR members who will have access and potentially benefit	0-100 101-400 401-700 <b>701+</b>	0 1 2 <b>3</b>	Accessible to all GVR members, will likely be utilized by non-GVR members as well. Attendance will likely be limited to GVR members with pets.
What is the participation trend been over the last 3 years?	Decrease or 0 1-5% increase 5-10% increase 10-15% increase <b>N/A</b>	0 2 4 6	
Estimated additional annual maintenance costs (E.g., Long-term costs? Annual replacements? Additional staff required?)	Decrease or 0 <b>1-5% increase</b> 5-10% increase 10-15% increase	4 <b>3</b> 2 1	<i>Supplies (waste bags), additional staff likely required. Equipment repairs and replacements, slight increase in utilities. Possible insurance could be increased.</i>

Scoring Range	
Poor	0-6
Fair	7-12
<b>Good</b>	<b>13-20</b>
Excellent	21-31

**Disqualified in preliminary questioning**  
**Score: 18**

## Capital Request Criteria & Impact Assessment

### Club Specific Criteria

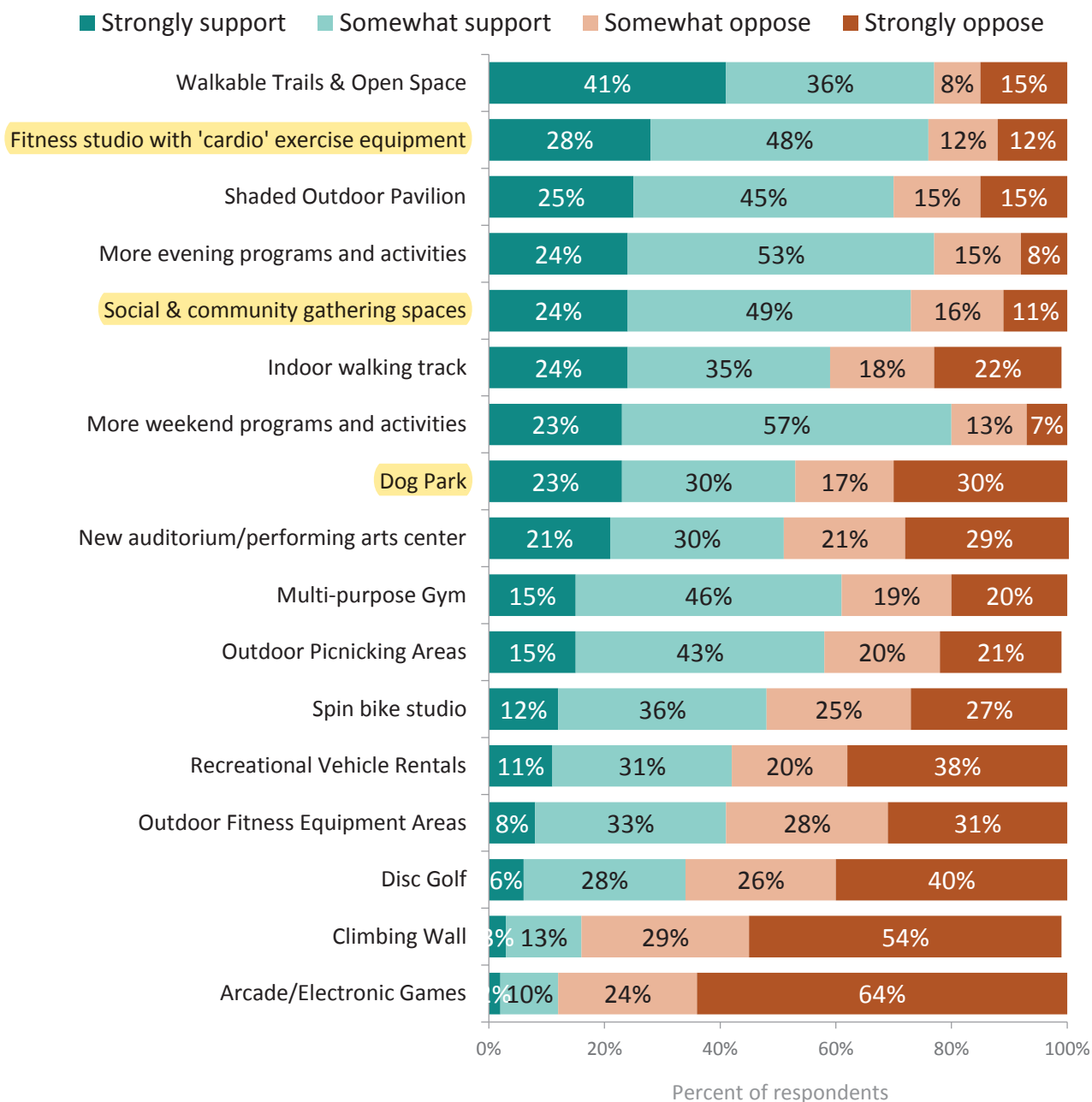
Preliminary Questions			Details
Are there health & safety impacts tied to this project/request  	<b>Yes</b> No		If Yes, stop scoring and process request through the <b>Request for Health, Safety, or Americans with Disabilities Act (ADA) Services</b> form/process. <i>Safety concern with dog bites/aggression</i>

Club Specific Criteria	Rating		Details
Request conforms to CPM/Club Agreement	Yes/No		If No, stop scoring and recategorize request (ex. Club responsibility)
Number of GVR club members who will have access and can benefit	0-50	0	
	51-100	1	
	101-200	2	
	201-500	3	
	501+	4	
Cost per club member			Calculate cost and divide by club's active membership numbers
Has Club taken steps to maximize utilization?	No Yes	0 3	Items to consider: expand club hours, cap time at each station daily/weekly, reorganized or consolidated, etc.
Would this request have an adverse effect on another group or GVR members? Loss of space?	Yes No	0 2	
Club's history of Capital Funding Requests reviewed and included?	No Score		Review data sheet of previous requests and awards, include in report

Scoring Range	
Poor	
Fair	
Good	
Excellent	

**Figure 10: Support for Additional Improvements**

Over the next few years, GVR may make additional improvements to its recreational facilities by adding new programs or deleting existing ones. Potential improvements or new programs may include those listed below. Please indicate the extent to which you would support GVR pursuing each of the items listed below, understanding there will be NO ANNUAL DUES INCREASE to support any of these activities.



This chart displays the proportion of those with an opinion. Between 7% (walkable trails and open space) and 32% (disc golf) of survey participants gave a response of “don’t know” when rating items on this list (see Table 18 in *Appendix A: Complete Responses to Survey Questions*).

## Americans Agree Dog Parks Benefit Local Communities

---

 [nrpa.org/about-national-recreation-and-park-association/press-room/americans-agree-dog-parks-benefit-local-communities/](https://www.nrpa.org/about-national-recreation-and-park-association/press-room/americans-agree-dog-parks-benefit-local-communities/)

(November 5, 2018)

---

### ***Local parks and recreation agencies provide dog parks for the areas they serve***

---

**Ashburn, Va. (Nov. 5, 2018)** — According to a recent poll conducted by the [National Recreation and Park Association \(NRPA\)](#), 9 in 10 (91 percent) Americans believe dog parks provide benefits to the communities they serve. More than half (55 percent) of park and recreation agencies currently have at least one dog park.

Americans list the top three benefits a dog park can have on a community as:

- **Gives dogs a safe space to exercise and roam around freely (60 percent)**
- **Allows dogs to socialize with other dogs (39 percent)**
- **Allows owners a chance to be physically active with their pet (36 percent)**

Availability of dog parks is especially popular among millennials (94 percent) and Gen Xers (92 percent) followed by baby boomers (89 percent) who agree dog parks provide benefits to communities.

“Dog parks are among the fastest growing amenities park and recreation agencies offer,” said Barbara Tulipane, CAE, NRPA president and CEO. “Whether it’s allowing dogs a chance to play off-leash or get exercise with their owners, having a safe space to roam freely benefits the surrounding communities.”

This poll is part of NRPA’s [Park Pulse](#), a continuing series of monthly surveys that gauge the public’s opinion on topics relating to parks and recreation. To explore previous Park Pulse survey results, visit [www.nrpa.org/Park-Pulse](http://www.nrpa.org/Park-Pulse).

To view the interactive charts with the survey results, [click here](#).

To view the full-size infographic, [click here](#).

To learn more about NRPA, visit [www.nrpa.org](http://www.nrpa.org).

###

# Capital Request Criteria & Impact Assessment

<https://apdt.com/resource-center/dog-park-pros-cons/>

## Dog Park Pros and Cons

The Association of Professional Dog Trainers is an organization that was created to educate its members, the public, and other pet-care related industries in the proper management of pet dogs. A dog park can be an asset or a detriment to a community. The goal of this document is to provide, in outline format, a compilation of the advantages, disadvantages, and things to think about for communities and/or the individuals to consider regarding dog park development.

### Advantages:

#### Dog Socialization Advantages

- Excellent source of dog-dog social interaction
- Excellent source of dog-people social interaction

#### People Socialization Advantages

- Excellent source of people-people social interaction
  - Dog-oriented people can meet and interact
  - Doggy play dates can be arranged

#### Physical and Mental Stimulation Advantages

- Excellent source of off-leash exercise for active dogs
  - Dog parks allow dogs to get adequate physical and mental exercise, thereby lessening destructive and annoying behaviors in general which can benefit society as a whole

#### Educational Advantages

- Good opportunity for owners to learn about dogs through observation and provides the opportunity to learn from more experienced owners
- Opportunity for well-mannered-dog advocates to demonstrate how they turned their dog into a well-mannered dog

#### Community Advantages

- Dog parks which are designed for dogs only, lessen the chance of owners letting their dogs off-leash in on-leash parks
- No cars, rollerbladers, skateboarders, bikes, etc. likely to be encountered
- More likely to encounter people who enjoy dogs
- Could provide location for community dog activities

# Capital Request Criteria & Impact Assessment

## Disadvantages:

### For People

- Potential of danger from aggressive dogs
- Potential of danger of physical injury from dog-related hazards
- Potential of lawsuits arising from dog fights
- Potential for parasites

### For Dogs

- Potential of danger from aggressive dogs
- Intact dogs may create problems
- Potential for parasites and disease
- Potential for lack of impulse control and over-excitement
- Not appropriate for small and large dogs at the same time
- Potential for injury

### For the Community

- Some people will not understand the concept and will abuse the park
  - Won't pick up after their dog
  - May leave dog unattended
  - Allow their dog to indulge in inappropriate behavior
- Some people will not be educated enough about their dogs to know if a dog park is appropriate for their dog
- Potential for noise
- Potential liability issues



# Opinion

## Green Valley News

101 S. La Cañada Drive, Suite 24 • Green Valley, AZ 85614  
(520) 625-5511

**Dru Sanchez** PUBLISHER/ADVERTISING MANAGER 547-9722 dsanchez@gvnews.com

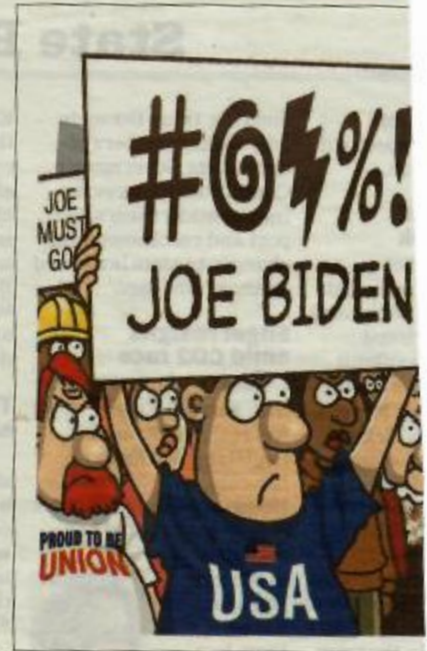
**Ian Kirkwood** GENERAL MANAGER 547-9723 ikirkwood@gvnews.com

**Dan Shearer** EDITOR 547-9770 dshearer@gvnews.com

BUSINESS OFFICE 625-5511 accounting@gvnews.com

**Graham Harrington** PRODUCTION MANAGER 547-9754 gsh@gvnews.com

**Bonnie Olsen** CIRCULATION DISTRICT SUPERVISOR 547-9744 bolsen@gvnews.com



9/15/2021

## Letters to the Editor

### Follow the rules

My dog was attacked and my husband was badly bruised at Anamax Park dog park and the police did nothing. Sure, they took a report and talked to the owner of the large dogs that attacked my 7-month-old puppy.

According to the witness, who police did not speak to, the lady who owned the dogs let them out of her car without holding on to their leashes. Next time it could be a child that gets attacked instead of another dog. Will the police do something then? Should we arm ourselves and not depend on the police to uphold the law?

After talking to other people and getting responses from Nextdoor, I have found out that dogs being attacked at Anamax Park is common.

Why are the rules of the park not being followed? Do we have to arm ourselves and take the law into our own hands to protect our pets and ourselves?

**Sandy Rockowitz**  
Green Valley

### Mix it up

The dog park at Quail Creek Veterans Municipal Park is a wonderful place for dogs and people alike ("Not an entitlement," Sept. 8). The rules for use of the park are at best

### Letters policy

Letters may be edited for length, accuracy and clarity, and should not exceed 200 words. Longer letters may run at the editor's discretion. "In My View" commentaries should not exceed 500 words.

• E-mail: letters@gvnews.com  
• Mail: P.O. Box 567,  
Green Valley, AZ 85622.

arbitrary and capricious and must be taken with a grain of salt.

The small-dog side is for those canines under 30 pounds. The larger side assumes anything over that. The large dogs can also be 100-150 pounds with aggressive tendencies, and a medium-size dog is no match for these guys. My dog is about 40-50 pounds, a lovely little lab with a heart of gold, and a deathly fear of big dogs. Many dogs are older, or have physical limitations, or are rescue animals who are timid, and cannot handle the aggression of the larger dogs.

So, a good many people bring their larger dogs to the small side for socialization and recreation. Most of those with larger dogs

try to come to the park when smaller dogs are not there, like early morning.

I take my dog about 6 a.m. and the group of little and bigger dogs mix very well. I've only had one person bark at me to remove my dog to the larger side. Some people just like to bark. If a person takes issue with my dog being on the small-dog side I simply go home because she has been attacked on so many occasions that I can't risk her safety on the large-dog side. I can assure the letter writer that the dog owners have plenty of integrity and consideration for their neighbors, but we can't put our animals at risk.

Understand the issues before insulting your neighbors. Most of the "wee ones" do quite well in a mixed park.

**Elizabeth Jollie**  
Green Valley

### A promise

President Biden made two promises. One to Americans in Afghanistan that no one would be left behind. The second was to the Taliban that we would be out by Aug. 31. Only one was kept, that being to the Taliban. Remember that in 2022 and 2024. Vote wisely.

**Steve Ware**  
Sahuarita

**GVR DOG PARK**

The ± half-acre Dog Park site amenities include: fenced perimeter, landscape and artificial turf areas, pedestrian paths, shade areas and site furnishings (benches, trash cans, drinking fountains for Members and their dogs). The dog park is sited adjacent to the field house, and would be accessible from both the upper and lower parking lots, as well as from the neighborhood to the west.

Source: WSM 10yr. Strategic Master Plan

**GVR DOG PARK PROPOSAL**



This Photo by Unknown Author is licensed under CC BY

**Proposal: Construct a dog park at Canoa Ranch on the land adjacent to, and surrounding, the Pickleball courts.**

**Background:**

- In the 2018 GVR member survey, 53% supported a dog park facility.
- Nationwide, dog adoptions increased by 25% during COVID.
- There currently is no dog park in Green Valley. There are two in Sahuarita – one across the street from Quail Creek, and the other at Anamax park.
- The recently released master plan for Canoa Hills Trail park specifically prohibits a dog park, as it could interfere with wildlife in the park.
- Twenty percent of respondents to a July 2020 Nielsen survey said that they had adopted a dog during the pandemic. This figure compares to only 5% in the previous three months.

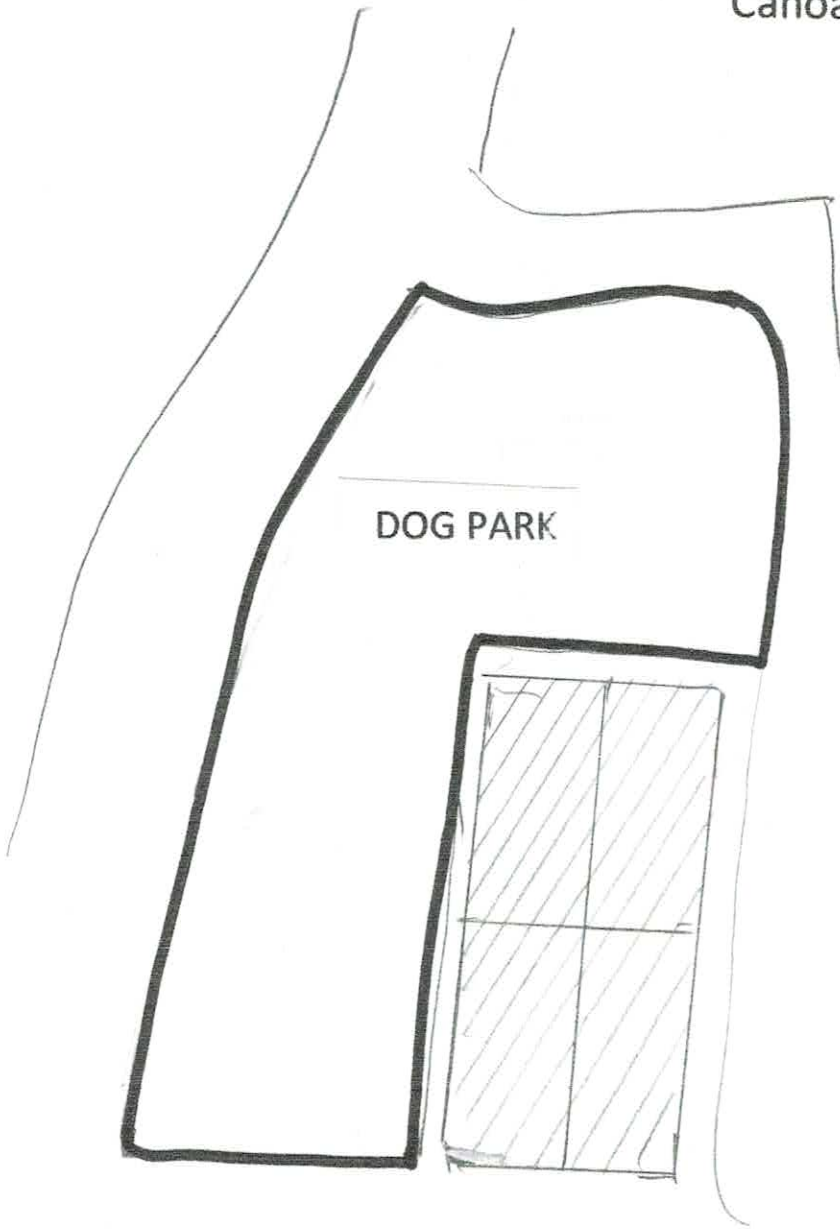
**AKC Dog Park Requirements:**

- ½ acre to a full acre, surrounded by a 4'-6' high chain link fence
- Fence should be equipped with a double-gated entry
- A separate area for small dog and large dogs
- A safe, accessible location
- Not too close by to a HOA
- Cleaning supplies: covered garbage can, waste bags and a pooper scooper station
- Shade and water for both dogs and owners, along with benches

**Why Canoa Ranch?**

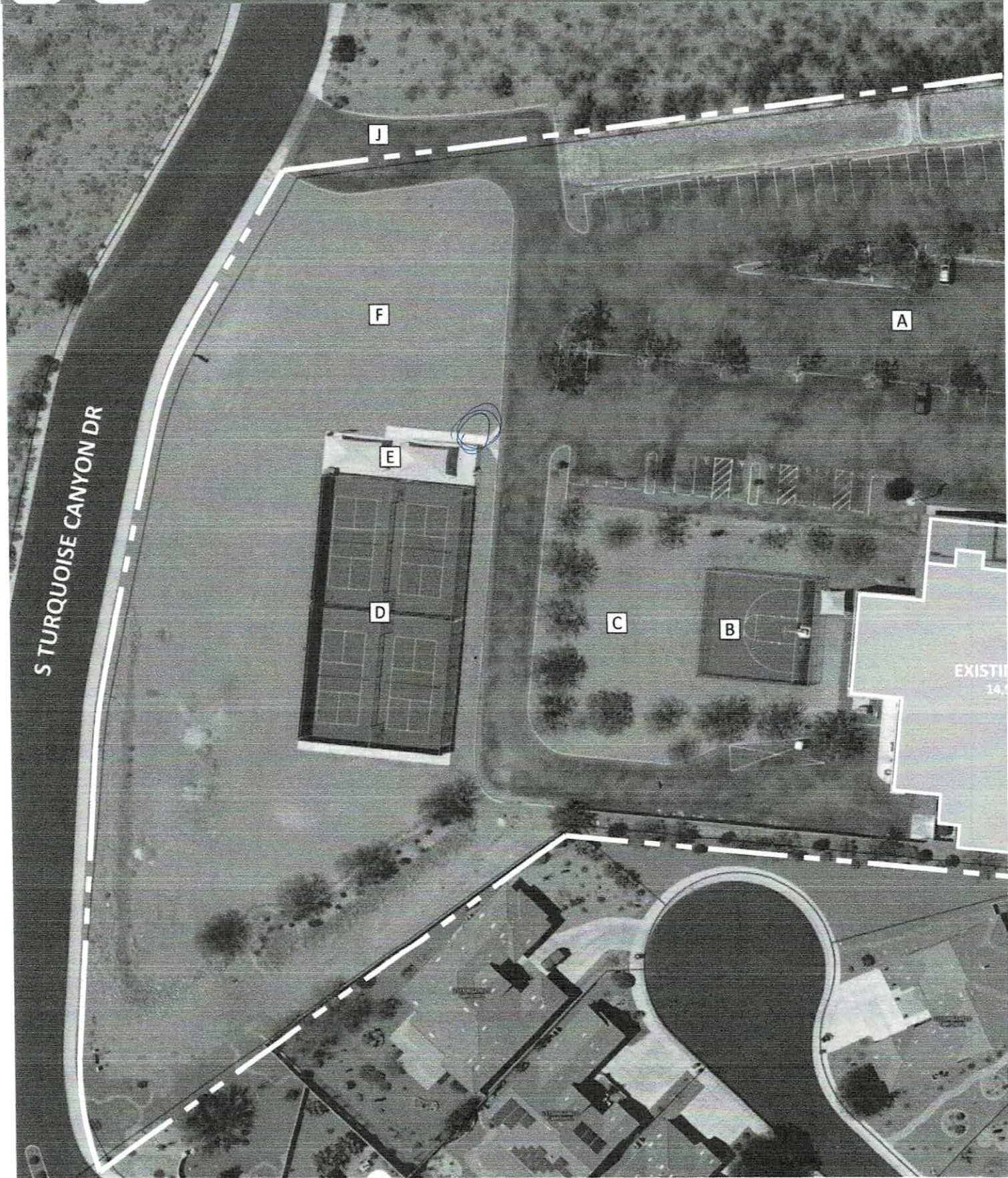
- Property/space is owned by GVR & is not designated for another building in the Master Plan
- Water is available (PB Court drinking fountain)
- Noise to HOA – not more than existing PB players

PROPOSED GVR DOG PARK  
Canoa Ranch Rec Center



# 08

## CANOA RANCH CENTER



## DOG PARK RULES

- Park Hours are sunrise to sunset
- Dogs should be leashed entering & exiting the park
- Female dogs in heat are not permitted
- Use of park is at your own risk
- Dog owners are responsible for any injuries/damage
- Aggressive or unhealthy dogs are not permitted
- Dogs must wear a collar/harness
- Owners must monitor their dog at all times
- Owners must clean up after their dog; pick up dog waste and place in receptacles provided
- Make sure your dog is current on all its recommended shots
- Make sure your dog does not engage in excessive bullying or barking
- Be considerate of others
- Dogs may run "off leash" only in fenced in area
- Puppies using the dog park must be at least 4 months old

